

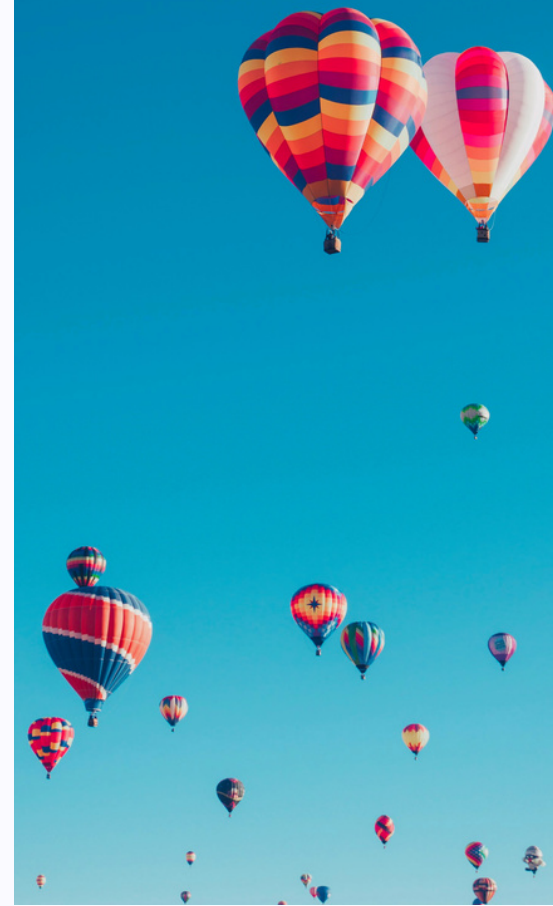
ADD-ONS 2024

LONDON
EPSOM

Ready to elevate your
summer camp experience?

BROWSE OUR CATALOGUE FOR

- **ATTRACTIONS**
- **EXCURSIONS**
- **TRAVELCARDS**



ADD-ON ATTRACTIONS 2024

LONDON EPSOM



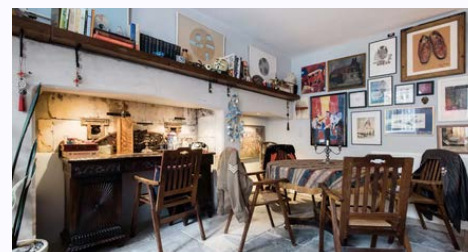
JANE AUSTEN CENTRE BATH

Step into the world of the celebrated author at the Jane Austen Centre in Bath. This charming and interactive museum not only offers insights into Jane Austen's life and works but also immerses visitors in the elegance of the Regency period. Ideal for literature enthusiasts, this experience promises a delightful journey back to the early 19th century, where Austen's timeless novels were brought to life.



WALKING TOUR OF JANE AUSTEN'S BATH BATH

The Walking tour of Jane Austen's Bath, organised by the Jane Austen Centre, is a delightful exploration of the city through the eyes of the famous author. Visitors can stroll through the streets and locations that inspired Austen's novels, accompanied by expert guides. This tour is a charming way to experience the historical and literary significance of Bath, making it ideal for Austen fans and history buffs alike.



JANE AUSTEN CENTRE + WALKING TOUR BATH

Immerse yourself in the world of Jane Austen with a combined package. Explore the charming and interactive museum in Bath, gaining insights into Austen's life and the Regency period. Then, join the Walking Tour organized by the Jane Austen Centre, where expert guides lead you through the streets and locations that inspired Austen's novels, making it a delightful experience for Austen enthusiasts and history buffs alike.



ROMAN BATHS BATH

The Roman Baths in Bath present a unique opportunity to explore one of the best-preserved ancient Roman spa sites in the world. Visitors can marvel at the stunning architecture, ancient Roman artifacts, and the steaming natural hot springs that have attracted travelers for millennia. This historical treasure, nestled in the heart of Bath, offers an educational yet mystical glimpse into ancient Roman life and culture.



VICTORIA ART GALLERY BATH

The Victoria Art Gallery in Bath is a haven for art lovers, showcasing a rich collection of British art from the 15th century to the present day. Located near Pulteney Bridge, it features works by Gainsborough, Turner, and many more. This gallery is a peaceful retreat for those seeking artistic inspiration and cultural enrichment.



BRIGHTON I360 BRIGHTON

The Brighton i360, a towering observation tower on the Brighton seafront, offers breathtaking panoramic views of the English coastline. As the world's tallest moving observation tower, it provides a thrilling experience, gently gliding visitors 450 feet into the sky in a futuristic glass viewing pod. This attraction is perfect for those seeking a unique perspective of Brighton's picturesque landscapes and vibrant cityscape.



BRIGHTON MUSEUM & ART GALLERY BRIGHTON

Nestled in the cultural heart of Brighton, the Brighton Museum & Art Gallery boasts an eclectic collection ranging from local history to world art. Visitors are invited to explore exhibits that span ancient artefacts, contemporary art, and vibrant fashion displays, all housed in a stunning Victorian building. This attraction offers a captivating journey through time and creativity, perfect for inspiring young minds and art enthusiasts.



ROYAL PAVILION BRIGHTON

The Royal Pavilion stands as a striking testament to regal extravagance and the whimsical architectural tastes of King George IV. With its Indian-inspired exterior and opulent Chinese-style interior, this former royal residence offers a unique glimpse into Britain's regency past. Touring the lavishly decorated rooms and picturesque gardens is a must-do, transporting visitors into a world of historic luxury and royal splendour.

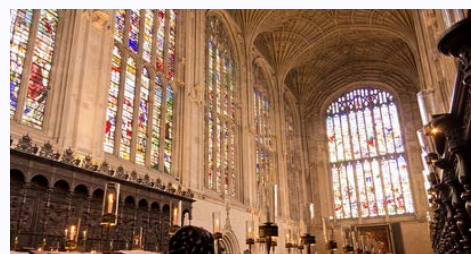
ADD-ON ATTRACTIONS 2024

LONDON EPSOM



PUNTING CAMBRIDGE

Punting on the River Cam offers an idyllic perspective of Cambridge, gliding past historic colleges and under famous bridges with the push of a pole. This quintessential Cambridge activity provides not just relaxation, but also a unique view of the University's stunning architecture and pristine gardens, all from the tranquility of the water. Perfect for a serene escape, punting is both a tradition and a pleasure, often accompanied by fascinating tales from skilled punters.



KING'S COLLEGE CHAPEL CAMBRIDGE

King's College Chapel in Cambridge is an architectural masterpiece, renowned for its breathtaking Gothic structure and the largest fan-vault ceiling in the world. This iconic chapel, steeped in history, is not only a symbol of Cambridge University's heritage but also houses an impressive collection of medieval stained glass. A visit here is a journey into the heart of British history and academic excellence, sure to awe and inspire.



CANTERBURY CATHEDRAL CANTERBURY

Canterbury Cathedral, a UNESCO World Heritage Site, is a symbol of English Christian heritage and medieval architecture. As the mother church of the Anglican Communion, it's significant in religious history, including Thomas Becket's martyrdom. Explore cloisters, stained glass, and artifacts, making it a must-visit for those intrigued by Britain's religious and architectural legacy.



THORPE PARK CHERTSEY

Thorpe Park in Surrey, England, is a thrill-seeker's paradise, boasting some of the most exhilarating rides and attractions in the UK. From high-speed roller coasters to water rides, the park offers an adrenaline-fueled experience for adventure enthusiasts. It's an ideal destination for those looking for excitement and fun, with attractions to challenge even the bravest of visitors.



BRITISH MUSEUM LONDON

The British Museum in London is a treasure trove of global history and culture, housing a vast collection that spans over two million years of human history. From the Rosetta Stone to the Elgin Marbles, its exhibits offer an unparalleled journey through time and across continents. This iconic institution is a must-visit for anyone interested in the rich tapestry of world civilizations and their legacies.



CHURCHILL WAR ROOMS LONDON

The Churchill War Rooms in London offer a unique opportunity to step into the secret underground headquarters where Winston Churchill and his wartime cabinet navigated WWII. This historical bunker complex, preserved as it was during the 1940s, provides an immersive experience into the life and legacy of one of Britain's most iconic leaders. It's a compelling visit for those interested in wartime history and the strategic decisions that shaped the modern world.



HAMPTON COURT PALACE LONDON

Hampton Court Palace, Henry VIII's opulent Tudor palace, is a splendid journey into England's royal past. Visitors can explore its grand rooms, get lost in the famous maze, and stroll through the magnificent gardens that stretch along the River Thames. This majestic palace not only offers a glimpse into royal life but also boasts a rich programme of events and exhibitions, making it an enchanting experience for all ages.



HARD ROCK CAFÉ LONDON

The Hard Rock Café in London, situated in the heart of the city, offers a unique blend of music, history, and dining. Known for its legendary collection of music memorabilia, this iconic restaurant provides a vibrant atmosphere where visitors can enjoy classic American cuisine. It's a must-visit for music lovers and those looking to experience a lively and culturally rich dining experience.

ADD-ON ATTRACTIONS 2024

LONDON EPSOM



HMS BELFAST LONDON

Anchored on the River Thames, HMS Belfast is a historic warship that offers a vivid insight into life at sea during World War II and beyond. This impressively preserved cruiser allows visitors to explore its nine decks, including the operations room, gun turrets, and living quarters. An immersive experience awaits, ideal for history enthusiasts and those interested in naval warfare.



KENSINGTON PALACE LONDON

Kensington Palace, set in the picturesque Kensington Gardens, is a residence of the Royal Family and a site of significant historical importance. Visitors can explore the lavish state rooms, view exquisite royal fashion, and discover stories about its famous former residents, including Queen Victoria and Princess Diana. This palace offers a unique glimpse into royal life and history, set against the backdrop of beautiful gardens.



LEGOLAND LONDON

Legoland, located near London, is a vibrant theme park that promises a fun-filled day for families and Lego enthusiasts. With its interactive rides, building workshops, and impressive Lego models, including replicas of famous landmarks, it's an adventure into creativity and imagination. Ideal for children and the young at heart, Legoland is a colourful and exciting escape from the city.



LONDON DUNGEON LONDON

The London Dungeon offers a thrilling and chilling journey through the darker side of London's history. With live actors, special effects, and gripping storytelling, visitors are transported to times of plague, fire, and infamous characters like Jack the Ripper. It's a uniquely entertaining and educational experience that combines history with horror.



LONDON EYE LONDON

The London Eye, a giant Ferris wheel on the South Bank of the River Thames, offers breathtaking views of the city's skyline. As one of London's most famous landmarks, it provides a unique vantage point to see iconic buildings and landmarks from 135 meters in the air. Ideal for panoramic photography and seeing London from a different perspective, the London Eye is a must-visit for any traveller.



LONDON ZOO LONDON

The London Zoo, located in the picturesque Regent's Park, is one of the oldest zoos in the world and home to a diverse range of animals. From the Land of the Lions to Penguin Beach, visitors can enjoy close encounters with wildlife and learn about conservation efforts. It's an educational and fun day out for all ages, offering a chance to explore the animal kingdom in the heart of London.



MADAME TUSSAUDS LONDON

Madame Tussauds in London is a world-famous wax museum where visitors can see lifelike figures of celebrities, historical figures, and fictional characters. From the British Royal Family to Hollywood stars, it provides an opportunity for unique photo moments with famous personalities. This attraction combines artistry with entertainment, making it a fun experience for all ages.



MUSICAL LONDON

London's West End is renowned for its dazzling array of musicals, offering an unforgettable experience in the heart of the city's vibrant cultural scene. From classic shows to contemporary masterpieces, there's a musical for every taste, each promising spectacular performances, captivating music, and stunning stagecraft. For those interested in adding a touch of theatrical magic to their trip, we can arrange tickets to the musical of their choice, subject to availability, ensuring an enchanting evening in one of the world's most famous theatre districts.

ADD-ON ATTRACTIONS 2024

LONDON EPSOM



NATIONAL GALLERY LONDON

The National Gallery, located in Trafalgar Square, is a prestigious art museum housing a vast collection of European paintings from the 13th to the 19th centuries. Visitors can admire works by masters such as Van Gogh, Da Vinci, and Turner, offering a journey through the history of Western art. It's an essential visit for art lovers and those seeking to experience the richness of European artistic heritage.



NATIONAL MARITIME MUSEUM LONDON

The National Maritime Museum in Greenwich offers an in-depth look into Britain's maritime history and its influence on the modern world. Featuring a vast collection of maps, ship models, and artefacts, it's a place where history comes to life. This museum is perfect for those interested in exploring the adventures and challenges of seafaring, navigation, and the exploration of the oceans.



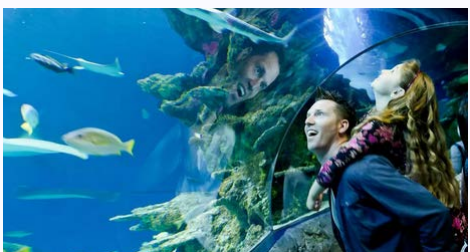
NATURAL HISTORY MUSEUM LONDON

The Natural History Museum in London is a temple of discovery, where visitors can explore the wonders of the natural world. From the iconic dinosaur skeletons to the mesmerising mineral gallery, the museum offers an unparalleled journey through our planet's past and present. This landmark attraction is not only educational but also inspires awe and curiosity in visitors of all ages.



SCIENCE MUSEUM LONDON

The Science Museum in London is a powerhouse of innovation, showcasing the thrilling world of science and technology. With interactive exhibits spanning space exploration, medical history, and the digital revolution, it offers a hands-on experience that ignites the imagination. Perfect for aspiring scientists and curious minds, this museum is a portal to the marvels of human discovery.



SEA LIFE LONDON LONDON

Dive into the underwater world at Sea Life London, an aquatic adventure in the heart of the city. Home to a vast array of marine life, from the graceful stingrays to the mysterious sharks, it offers an up-close experience with some of the ocean's most fascinating inhabitants. It's an enchanting and educational visit, perfect for those who love to explore the mysteries of the deep.



SHERLOCK HOLMES MUSEUM LONDON

The Sherlock Holmes Museum, located at 221B Baker Street, is a charming tribute to Sir Arthur Conan Doyle's famous detective. This meticulously recreated Victorian house offers an immersive experience into the world of Holmes and Watson. It's a must-visit for fans of the novels, offering a nostalgic journey into the heart of Victorian London.



TATE MODERN LONDON

Tate Modern, housed in a former power station on the banks of the Thames, is a leading modern art gallery in London. Its extensive collection includes works from Picasso, Warhol, and Dalí, offering a thought-provoking journey through contemporary and modern art. This iconic museum is a must-visit for art enthusiasts and anyone seeking to understand the artistic movements that have shaped our world.



THAMES RIVER CRUISE LONDON

A Thames River Cruise offers a unique perspective of London, gliding past the city's most iconic landmarks like the Houses of Parliament and the Tower Bridge. It's an ideal way to see the city from a different angle, providing a relaxing and picturesque experience. Perfect for history buffs and sightseers, this cruise is a delightful way to appreciate the beauty and history of London's river.

ADD-ON ATTRACTIONS 2024

LONDON EPSOM



TOWER BRIDGE LONDON

Tower Bridge, an iconic symbol of London, is not only an engineering marvel but also offers breathtaking views from its high-level walkways. Visitors can learn about the bridge's fascinating history and see the Victorian engine rooms that power its lifting mechanism. A visit here combines stunning architecture, engineering ingenuity, and a unique view of the city.



TOWER OF LONDON LONDON

The Tower of London is a historic fortress that has served as a royal palace, prison, and treasury. Home to the Crown Jewels and tales of intrigue, it offers a captivating insight into British history. This UNESCO World Heritage Site is a must-see for its intriguing past and the chance to meet the famous Beefeaters.



VICTORIA AND ALBERT MUSEUM LONDON

The Victoria and Albert Museum is the world's leading museum of art and design, showcasing a vast collection that spans 5,000 years of human creativity. From ancient textiles to contemporary fashion, it offers an unrivalled exploration of decorative arts. This museum is a treasure trove for design lovers and those interested in the artistic expressions of cultures around the world.



WEMBLEY STADIUM LONDON

Wembley Stadium is an iconic venue, synonymous with major sporting and music events. A tour of the stadium allows visitors to experience the excitement of the players' tunnel and the glory of the Royal Box. It's a must-visit for sports and music fans, offering a behind-the-scenes look at one of the world's most famous entertainment venues.



BODLEIAN LIBRARIES OXFORD

The Bodleian Libraries in Oxford are a marvel of literary history, home to over 12 million items and some of the world's most significant manuscripts. As one of the oldest libraries in Europe, it offers a fascinating glimpse into the academic heart of Oxford University. Throughout the 60-minute guided tour, visitors can explore historic reading rooms and discover rare treasures, making it a must-visit for book lovers and scholars.



OXFORD CASTLE AND PRISON OXFORD

Oxford Castle and Prison, a Norman medieval castle with a rich and tumultuous history, offers an intriguing exploration into Oxford's past. Visitors can delve into the castle's 1,000-year history, from its origins as a Saxon burgh to its time as a Victorian prison. The guided tours, led by costumed characters, provide an engaging and educational insight into medieval and Victorian life in Oxford.



SALISBURY CATHEDRAL SALISBURY

Salisbury Cathedral, a masterpiece of medieval architecture, is home to the tallest church spire in the UK and the best-preserved original Magna Carta. Its stunning Gothic structure, serene cloisters, and vibrant stained glass windows offer a peaceful yet awe-inspiring experience. This cathedral is not only a religious landmark but also a testament to architectural brilliance and historical significance.



STONEHENGE SALISBURY

Step into the world of the celebrated author at the Jane Austen Centre in Bath. This charming and interactive museum not only offers insights into Jane Austen's life and works but also immerses visitors in the elegance of the Regency period. Ideal for literature enthusiasts, this experience promises a delightful journey back to the early 19th century, where Austen's timeless novels were brought to life.

ADD-ON EXCURSIONS 2024

LONDON EPSOM



BATH WITH ENTRY TO ROMAN BATHS

Bath, a UNESCO World Heritage city, is famed for its Georgian architecture and ancient heritage. A visit to the Roman Baths, the city's most famous attraction, takes you back to Roman times. Explore the well-preserved remains of one of the greatest religious spas of the ancient world. Walk where Romans walked around the steaming pool and learn about ancient bathing rituals. This tour combines the elegance of Bath with a deep dive into its Roman past.



BRIGHTON WITH ENTRY TO BRIGHTON i360

Visit the vibrant city of Brighton and ascend the Brighton i360, the world's tallest moving observation tower. Experience breathtaking panoramic views of the English Channel and Brighton's bustling cityscape. This excursion offers a unique perspective of Brighton's iconic landmarks and coastal beauty, combining urban exploration with aerial adventure.



BRIGHTON WITH ENTRY TO BRIGHTON i360 AND ROYAL PAVILION

Discover Brighton's lively culture, followed by visits to two of its most iconic attractions: the Brighton i360 and the Royal Pavilion. Start with a flight on the i360, offering spectacular views, and then explore the exotic Royal Pavilion, a former royal residence. Experience the Pavilion's rich history and opulent interiors, showcasing regal extravagance. This combination offers a comprehensive Brighton experience, from modern marvels to historical grandeur.



BRIGHTON WITH ENTRY TO BRIGHTON MUSEUM & ART GALLERY

Explore the cultural heart of Brighton, culminating in a visit to the Brighton Museum & Art Gallery. Situated in the Royal Pavilion gardens, the museum showcases diverse art, history, and fashion. Discover Brighton's heritage through exhibitions that highlight local and global influences. This visit is perfect for those keen on immersing themselves in Brighton's rich artistic and cultural scene.



BRIGHTON WITH ENTRY TO ROYAL PAVILION

Experience the eclectic city of Brighton and its crown jewel, the Royal Pavilion. Marvel at the Pavilion's striking architecture, a blend of Indian and Chinese styles, and explore its lavishly decorated interiors. Learn about the Pavilion's history as a royal residence and cultural hub. This visit offers an insight into Brighton's royal past and architectural innovations, making it a must-see for history and architecture enthusiasts.



CAMBRIDGE WITH PUNTING ON THE RIVER CAM

Cambridge, a city steeped in history and academia, is renowned for its prestigious university and beautiful architecture. Experience the quintessential Cambridge activity, punting on the River Cam, offering a unique view of the city's stunning colleges and bridges. Glide peacefully along the river, guided by skilled punters who share fascinating stories and insights. Punting provides a serene and picturesque perspective of Cambridge, perfect for a relaxing yet captivating day out. This activity is ideal for those wanting to experience Cambridge's charm from its iconic waterways.



ADD-ON EXCURSIONS 2024

LONDON EPSOM



CANTERBURY WITH ENTRY TO CANTERBURY CATHEDRAL

Canterbury, a historic English cathedral city, is a blend of medieval charm and modern vibrancy. Visit the magnificent Canterbury Cathedral, a UNESCO World Heritage Site and a pivotal location in religious and national history. Explore its stunning architecture, including the famous stained glass windows, and discover the site of Thomas Becket's martyrdom. The cathedral is not just a religious landmark but a testament to medieval craftsmanship. This excursion combines the allure of Canterbury with the awe-inspiring beauty and history of its famous cathedral.



HAMPTON COURT & WINDSOR WITH ENTRY TO HAMPTON COURT PALACE AND WINDSOR CASTLE

Combine visits to two of England's most prestigious royal residences: Hampton Court Palace and Windsor Castle. Start at Hampton Court Palace, exploring its Tudor history and beautiful gardens. Then, visit Windsor Castle, the oldest and largest inhabited castle in the world and an official residence of the Queen. Discover the State Apartments, St George's Chapel, and the Changing of the Guard at Windsor. This excursion offers a comprehensive experience of British royal history and architecture.



CARDIFF WITH ENTRY TO NATIONAL MUSEUM CARDIFF

Cardiff, the dynamic capital of Wales, is known for its unique blend of Welsh culture, modern development, and historic landmarks. A visit to the National Museum Cardiff is a highlight, offering insights into Welsh history, art, and natural sciences. Explore collections ranging from impressionist paintings to Welsh dinosaurs, providing a rich educational experience. The museum, located in the heart of Cardiff, is a gateway to Wales' past and present. This excursion is perfect for those interested in a comprehensive cultural and historical exploration of Wales.



LEEDS CASTLE, CANTERBURY & DOVER WITH ENTRY TO LEEDS CASTLE AND CANTERBURY CATHEDRAL

Journey through Kent's picturesque countryside to visit Leeds Castle, Canterbury, and Dover. Explore Leeds Castle, set on two islands on the River Len, known as 'the loveliest castle in the world'. In Canterbury, marvel at the historic Canterbury Cathedral, a site of pilgrimage and British heritage. Venture to Dover to witness its iconic white cliffs and rich naval history. This tour combines the elegance of English castles with the spiritual and natural beauty of Kent.



HAMPTON COURT WITH ENTRY TO HAMPTON COURT PALACE

Hampton Court, located in the London Borough of Richmond upon Thames, is famous for the magnificent Hampton Court Palace. Explore the palace's grandiose rooms, stunning gardens, and famous maze, once the home of Henry VIII. Discover the palace's rich history, from Tudor times to the present day, and experience the opulence and intrigue of the royal court. This visit to Hampton Court Palace is an immersive journey into England's royal past, perfect for history enthusiasts and fans of Tudor England.



OXFORD WITH ENTRY TO OXFORD CASTLE AND PRISON

Oxford, the 'City of Dreaming Spires', is renowned for its prestigious university and architectural beauty. Visit Oxford Castle and Prison, where history dates back to the Norman Conquest. Learn about the castle's transformation from a fortification to a prison, and explore its medieval remains. Walk through Oxford's historic streets, lined with iconic colleges and libraries. This day out offers a unique insight into Oxford's rich history and academic traditions.

ADD-ON EXCURSIONS 2024



PORTSMOUTH WITH ENTRY TO HISTORIC DOCKYARD

Portsmouth, a significant naval port on England's south coast, is steeped in maritime history. The Historic Dockyard is a must-visit, showcasing historic ships like HMS Victory and HMS Warrior. Explore the Mary Rose Museum, and learn about England's naval heritage. Experience the city's naval connections, from the dockyard to the modern waterfront. This trip is ideal for those interested in maritime history and naval warfare.



THORPE PARK

Thorpe Park, located in Surrey, is one of the UK's leading theme parks, offering an adrenaline-packed day out. Experience some of Europe's most exciting rides and attractions, including roller coasters and water rides. Enjoy interactive and immersive experiences that cater to thrill-seekers of all ages. Thorpe Park is not just about rides; it's an entire day of entertainment, shows, and dining. This excursion is perfect for those seeking excitement and fun.



STONEHENGE & SALISBURY WITH ENTRY TO STONEHENGE AND SALISBURY CATHEDRAL

Discover the mystery of Stonehenge, the prehistoric monument shrouded in mystery, set in the Wiltshire countryside. Explore the ancient stone circle and learn about its possible uses and meanings. Continue to Salisbury, home to the magnificent Salisbury Cathedral, boasting Britain's tallest spire. Marvel at the original Magna Carta in the cathedral's Chapter House. This tour offers a journey through time, from Neolithic Britain to medieval splendour.



WATFORD WITH ENTRY TO WARNER BROS STUDIOS – THE MAKING OF HARRY POTTER

Visit Watford, home to the Warner Bros Studios, and delve into the magic of Harry Potter. Explore the sets, props, and costumes used in the Harry Potter films. Learn about the filmmaking process, special effects, and see iconic locations like Diagon Alley and the Great Hall. This behind-the-scenes tour is a must for Harry Potter fans, offering a unique insight into the creation of the film series. Experience the magic that brought J.K. Rowling's beloved world to life.

LONDON EPSOM



STRATFORD-UPON-AVON WITH ENTRY TO SHAKESPEARE'S BIRTHPLACE AND SHAKESPEARE'S SCHOOLROOM & GUILDHALL

Stratford-upon-Avon is a haven for literature enthusiasts. Visit Shakespeare's Birthplace, where the world's most famous playwright was born and grew up. Explore Shakespeare's Schoolroom & Guildhall, where he was educated and inspired to become a playwright. Stroll through the town's charming streets and experience the Tudor world that shaped Shakespeare. This excursion is a deep dive into the life and times of the Bard, set in a quintessentially English town.



WINDSOR WITH ENTRY TO WINDSOR CASTLE

Windsor, a charming town on the River Thames, is home to Windsor Castle, an official residence of the Queen. Explore the opulent State Apartments, St George's Chapel, and witness the Changing of the Guard. Learn about the castle's history as a royal palace and fortress. Enjoy Windsor's delightful streets and riverside setting. This excursion offers a royal experience, combining historical grandeur with the charm of an English town.

ADD-ON TRAVELCARDS 2024

LONDON EPSOM



OFF-PEAK LONDON TRAVELCARDS

The TfL Off-Peak Travelcard is a cost-effective solution for exploring London, offering unlimited travel on the city's public transport network during off-peak hours, specifically **after 9:30 am on weekdays** and **all day on weekends** and public holidays. This convenient card provides access to buses, tubes, trams, and even some riverboat services, making city exploration both easy and affordable. Ideal for students and groups, the Off-Peak Travelcard allows travellers to discover London's myriad of attractions at a leisurely pace while avoiding the rush hour crowds.