

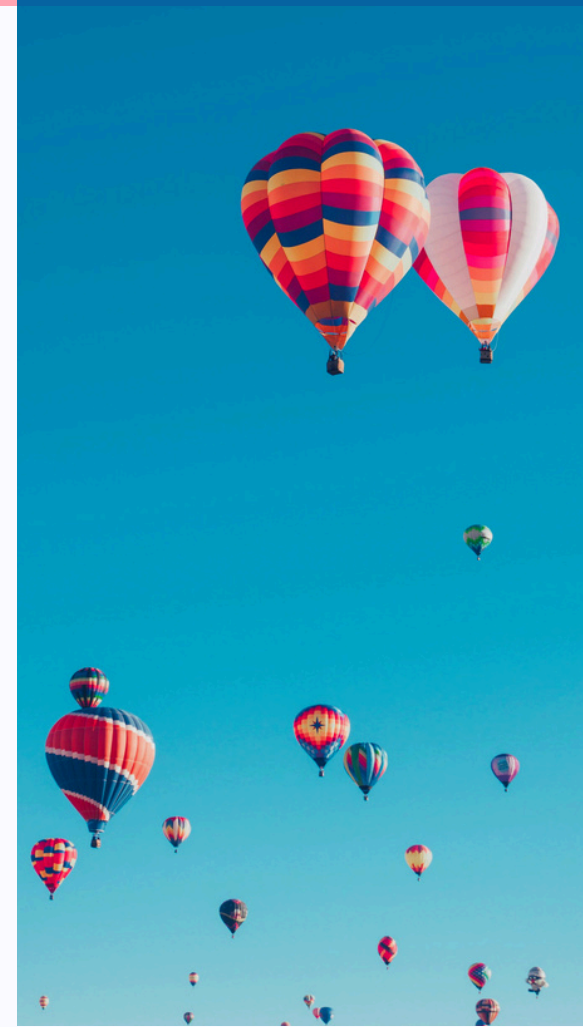
ADD-ONS 2025

DUBLIN

Ready to elevate your
summer camp experience?

BROWSE OUR CATALOGUE FOR

- **ATTRACTIONS**
- **EXCURSIONS**



ADD-ON ATTRACTIONS

DUBLIN



BOOK OF KELLS EXPERIENCE DUBLIN

The Book of Kells, housed in Dublin's Trinity College, is one of the world's most famous illuminated manuscripts. Visitors can admire this medieval masterpiece and explore the stunning Long Room Library. It's an inspiring journey into Irish history, art, and literature.



DUBLIN CASTLE DUBLIN

Dublin Castle, located in the heart of the city, offers a fascinating glimpse into Ireland's political and royal history. Tour its opulent State Apartments, medieval undercroft, and historic chapel. This landmark is a must-see for anyone visiting Dublin.



DUBLINIA MUSEUM DUBLIN

Dublinia takes visitors back in time to explore Dublin's Viking and medieval history. Through interactive exhibits, you can step into a Viking longhouse or walk the streets of medieval Dublin. It's an educational and fun journey into Ireland's past.



GUINNESS STOREHOUSE DUBLIN

The Guinness Storehouse in Dublin offers a fascinating journey through the history and production of Ireland's most famous beer. Explore interactive exhibits, learn the secrets of the brewing process, and enjoy a pint in the Gravity Bar with stunning city views. It's a must-visit for anyone in Dublin.



HOP-ON HOP-OFF BUS TOUR DUBLIN

Explore Dublin with ease on a hop-on hop-off bus tour, stopping at key attractions like Trinity College, Dublin Castle, and the Guinness Storehouse. Learn about the city's rich history and culture with live commentary or an audio guide. This flexible tour lets you discover Dublin at your own pace.



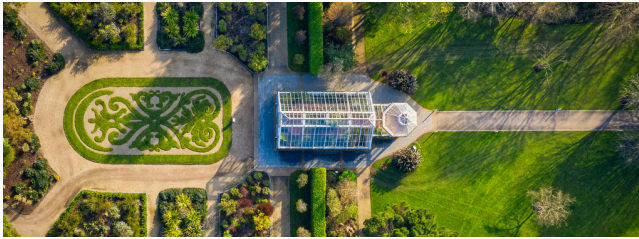
KILMAINHAM GAOL MUSEUM GUIDED TOUR DUBLIN

Kilmainham Gaol in Dublin offers a sobering insight into Ireland's fight for independence. Explore the cells, execution yard, and poignant exhibits that tell the stories of former prisoners. The guided tour provides a compelling look at Ireland's turbulent past.



ADD-ON ATTRACTIONS

DUBLIN



MALAHIDE CASTLE & GARDENS DUBLIN

Malahide Castle near Dublin is a historic gem surrounded by beautiful gardens. Explore the castle's rich history, stroll through the walled gardens, and visit the butterfly house. It's a charming mix of history and nature just outside the city.



NATIONAL LEPRECHAUN MUSEUM OF IRELAND DUBLIN

Step into Irish folklore at the National Leprechaun Museum in Dublin. Explore the myths and legends of Ireland through immersive exhibits and storytelling. This fun and quirky museum offers a magical journey into Ireland's cultural heritage.



NATIONAL MUSEUM OF IRELAND - ARCHAEOLOGY DUBLIN

Delve into Ireland's ancient past at the National Museum of Ireland - Archaeology in Dublin. Marvel at treasures like the Ardagh Chalice, the Tara Brooch, and the preserved bog bodies. This museum offers a fascinating insight into Ireland's rich cultural heritage.



NATIONAL MUSEUM OF IRELAND - NATURAL HISTORY DUBLIN

Known as the "Dead Zoo," this museum in Dublin houses a vast collection of preserved animals from around the world. Explore everything from Irish wildlife to exotic species in beautifully crafted Victorian displays. It's a must-visit for nature and history enthusiasts.



NATIONAL WAX MUSEUM DUBLIN

Dublin's National Wax Museum combines history, pop culture, and fun interactive exhibits. Meet lifelike wax figures of Irish legends, global icons, and fantasy characters. This family-friendly attraction offers a unique mix of education and entertainment.



VIKING SPLASH TOUR DUBLIN

The Viking Splash Tour offers a fun and unique way to see Dublin by land and water. Ride an amphibious vehicle while donning Viking helmets, and enjoy entertaining commentary about the city's history and landmarks. It's an unforgettable adventure for all ages.

ADD-ON EXCURSIONS

DUBLIN



BIRR + ENTRY TICKETS TO BIRR CASTLE

Explore the charming town of Birr, home to the magnificent Birr Castle. Visit the castle's award-winning gardens and learn about its scientific heritage, including the Great Telescope. This trip is perfect for history and nature enthusiasts alike.



CLIFFS OF MOHER

Discover the dramatic beauty of the Cliffs of Moher, one of Ireland's most famous natural landmarks. Walk along the cliff tops for breathtaking views of the Atlantic Ocean and Aran Islands. Learn about the area's geology and wildlife at the visitor centre.



GALWAY

Galway, Ireland's cultural heart, is a lively city known for its colourful streets and vibrant atmosphere. Visit historic landmarks like the Spanish Arch, enjoy traditional Irish music, and explore its bustling shops and cafés. This day is a perfect mix of heritage, culture, and fun.



GLENDALOUGH, WICKLOW

Visit Glendalough, a stunning valley in County Wicklow, known for its ancient monastic site and beautiful lakes. Explore the round tower, early churches, and the serene natural surroundings. This trip is ideal for those seeking a mix of history and breathtaking landscapes.



HOWTH & MALAHIDE + ENTRY TO MALAHIDE CASTLE & GARDENS

Discover the coastal charm of Howth and the historic beauty of Malahide. Visit Malahide Castle, explore its lovely gardens, and stroll along Howth's scenic harbour. This day combines history, nature, and seaside relaxation.



KILKENNY + ENTRY TICKETS TO KILKENNY CASTLE

Explore Kilkenny, Ireland's medieval capital, known for its cobbled streets and rich history. Visit Kilkenny Castle, a stunning Norman fortress with beautifully restored interiors and lush gardens. This day trip offers a blend of heritage, architecture, and charming Irish culture.



ADD-ON EXCURSIONS

DUBLIN



OTHER DESTINATION

Have a specific destination in mind?

Let us know your preferences, and we'll help you explore options for a full-day trip. Whether it's history, nature, or adventure, the possibilities are endless.

